



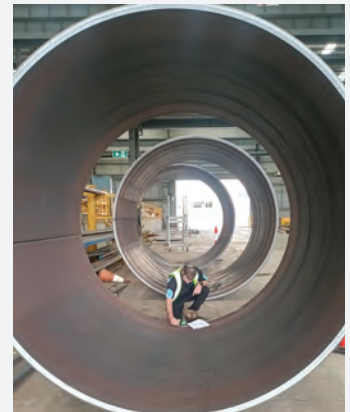
The specialists in steel plate rolling

RPG Australia is a specialist plate rolling facility. Housing five plate rolling machines with advanced rolling capabilities, we can produce just about any conceivable shape from a broad scope of steel products.

 Flatten, roll & form to shape

 State-of-the-art machinery

 Tailored steel processing solutions



Quality & Experience

RPG Australia offers a full suite of heavy steel processing capabilities to assist clients by providing an integrated, and one-stop-shop, solution. RPG's supply chain management capability is also offered, with finished products able to be delivered across Australia, free of burrs and slag.

RPG Australia can flatten and roll to template mild steel, Q&T plate, aluminium, stainless steel and boiler plate in varying thicknesses. RPG's new CNC Haeusler roller is ideal for repeatability and our rolling expertise extends to end setting, trimming of green, weld preps and quickie cutting as required.

With a strong commitment to safety, quality and the environment, this is reflective of the way we do business, our products, our service oriented approach and our proven safety record.

Capabilities

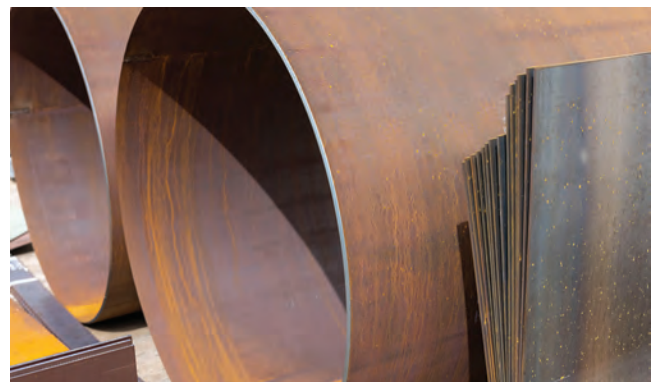
- 3mm, Ø 300mm x 3,000mm long
- 6mm, Ø 400mm x 3,000mm long
- 12mm, Ø 500mm x 3,000mm long
- 20mm, Ø 500mm x 3,000mm long
- 32mm, Ø 550mm x 3,000mm long
- 50mm, Ø 914mm x 3,000mm long
- 100mm, Ø 914mm x 1,100mm long
- 100mm, Ø 1820mm x 1,700mm long

* Grade and thickness of material may vary these capabilities.

** Please contact RPG for anything outside of this range.

Computer Aided Drafting (CAD)

We integrate our full suite of capabilities into our in-house Computer Aided Drafting (CAD) expertise. Having our CAD team under the same roof working with the latest design software technologies enables us to deliver optimum accuracy, faster productivity and superior quality outcomes. Our CAD team has the expertise to work with clients to ensure we tailor every solution to our clients' needs.



Common Shapes

- | | |
|--------------------|-----------------------|
| ■ Conical sections | ■ Elliptical sections |
| ■ Cylinders | ■ Multiple radii |
| ■ Strakes | ■ Spirals |
| ■ Mining buckets | |